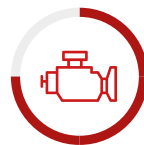




MINELLI



M40



205 kW



11,7-16 m

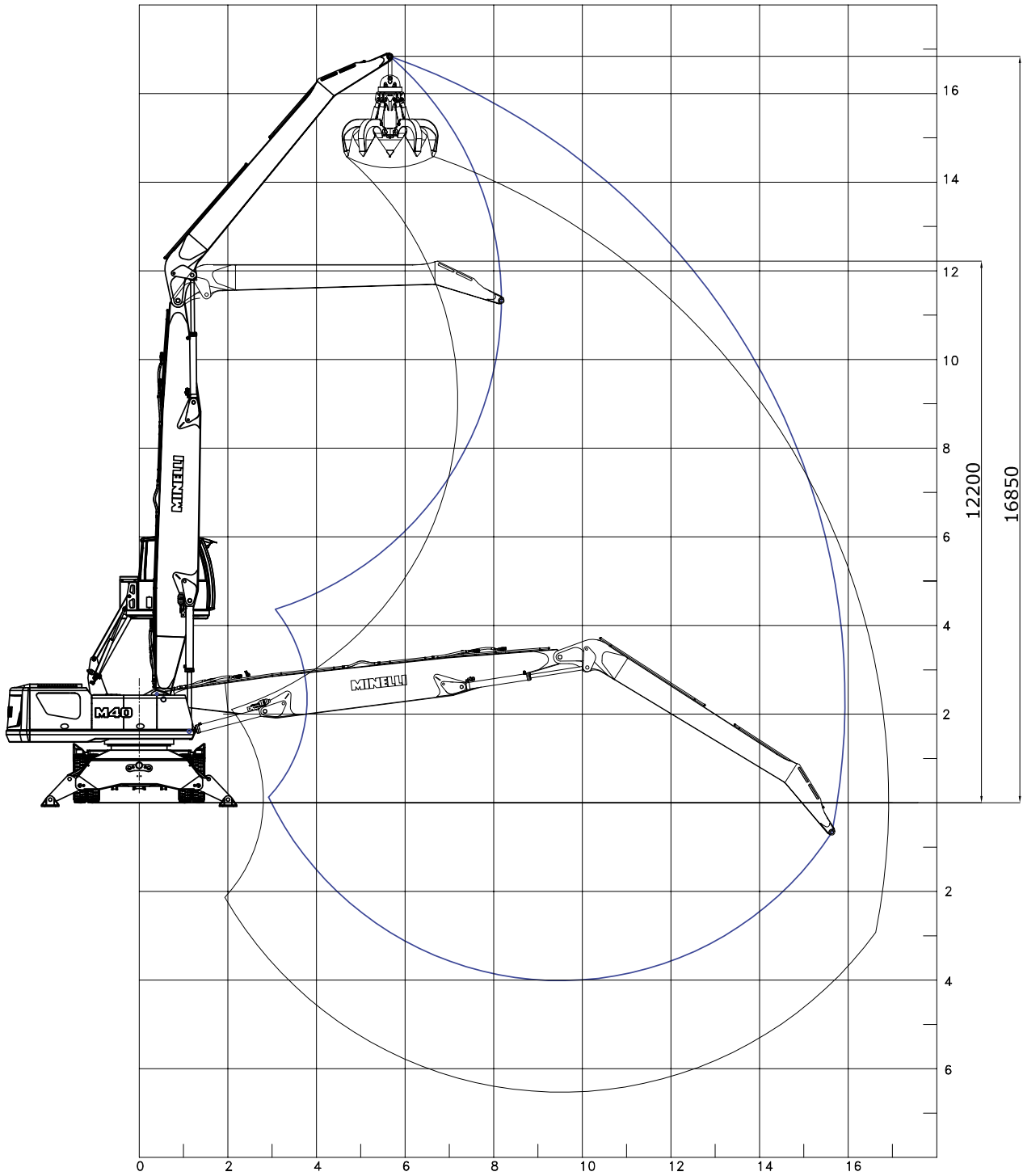


38-42 t

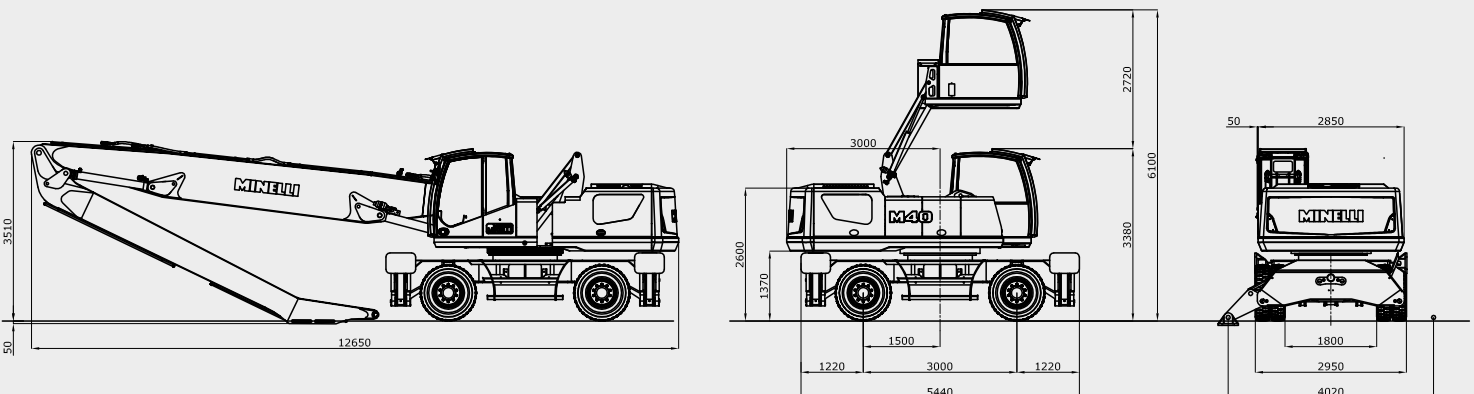
EN

360°

WORKING AREA M40.16



TRANSPORT DIMENSIONS



LOAD CAPACITY (t)

Height [m]	Undercarriage Configuration	Outreach [m]								
		3	4,5	6	7,5	9	10,5	12	13,5	15
15	On wheels	-	-	-	5,0	4,0	-	-	-	-
	Stabilized (on outriggers)	-	-	-	6,1	4,9	-	-	-	-
13,5	On wheels	-	-	-	-	4,0	3,4	-	-	-
	Stabilized (on outriggers)	-	-	-	-	6,0	4,9	-	-	-
12	On wheels	-	-	-	-	4,1	3,4	2,6	-	-
	Stabilized (on outriggers)	-	-	-	-	6,4	5,5	4,6	-	-
10,5	On wheels	-	-	-	-	4,1	3,4	2,6	2,2	-
	Stabilized (on outriggers)	-	-	-	-	6,4	5,6	5,0	4,1	-
9	On wheels	-	-	-	-	4,0	3,3	2,6	2,2	-
	Stabilized (on outriggers)	-	-	-	-	6,5	5,6	5,0	4,3	-
7,5	On wheels	-	-	-	5,4	3,9	3,3	2,5	2,1	1,7
	Stabilized (on outriggers)	-	-	-	7,7	6,6	5,8	5,1	4,4	3,6
6	On wheels	-	-	7,7	5,4	3,8	3,2	2,5	2,1	1,7
	Stabilized (on outriggers)	-	-	9,5	8,0	6,7	5,9	5,1	4,4	3,7
4,5	On wheels	-	10,2	7,1	5,2	3,7	3,0	2,4	2,0	1,6
	Stabilized (on outriggers)	-	14,2	10,3	8,3	6,9	6,0	5,1	4,4	3,7
3	On wheels	-	9,8	6,7	4,8	3,6	2,9	2,3	1,9	1,6
	Stabilized (on outriggers)	-	14,1	11,0	8,7	7,1	6,1	5,1	4,3	3,7
1,5	On wheels	-	9,4	6,1	4,6	3,5	2,8	2,2	1,8	1,5
	Stabilized (on outriggers)	-	14,0	11,4	8,9	7,2	6,1	5,1	4,3	3,6
0	On wheels	11,0	9,0	6,0	4,5	3,5	2,8	2,2	1,8	1,5
	Stabilized (on outriggers)	15,0	13,9	11,0	8,7	7,2	6,1	5,1	4,3	3,6
-1,5	On wheels	-	8,0	5,9	4,4	3,5	2,8	2,2	1,8	-
	Stabilized (on outriggers)	-	9,0	8,0	8,5	7,1	5,9	4,9	4,2	-
-3	On wheels	-	-	5,7	4,3	3,4	2,7	2,1	-	-
	Stabilized (on outriggers)	-	-	6,8	8,0	6,6	5,5	4,8	-	-

Height [m]	Undercarriage Configuration	MAX outreach [m]	
			16,0
2	On wheels		1,4
	Stabilized (on outriggers)		3,5

Loads are shown in Ton (t). With reference to ISO 10567 standard, load values refer to a maximum of 75% of the tipping load or to 87% of the hydraulic lifting force. The indicated loads must be understood with stationary machines, blocked axles on flat solid ground, valid for 360°. The equipment is an integral part of the load.

WEIGHT & DIMENSION

Operating weight - M40.16, 3000 mm-wide undercarriage with front and rear outriggers	40 t
Model operating weight	38 - 42 t
Max width	3000 mm
Wheel distance	3000 mm
Max outreach	16 m

DIESEL ENGINE

Brand & Type	PK 1206J-E70TTA
Emissions standard	EU STAGE V*
Number of cylinders	6 L
Air intake	Turbo Aftercooler
Valves/cylinder	4
Capacity	7000 cc
Max power (2200 rpm)	205 kW (280 CV)
Max torque (1500 rpm)	1257 Nm
Cooling	water cooling
Electric system	24 V
Battery	2 x 12 V / 100 Ah / 810 A
Full load consumption	204 g/kW

***Max emissions (g/kWh):** $NO_x = 0,4$ / $NMHC = 0,19$ / $CO = 5$ / PM (particulate) = 0,015.

A compact design and an efficient pipes insulation system enable a safe and easy access to compartments.

PowerCore® air filter with microcyclone prefilter. Completely soundproofed engine compartment. Sound power according to 2000/14/EC e 2005/88/EC.

- ☑ Battery switch.
- ☑ Integrated diagnostic system.
- ☑ Auto Idling.
- ☑ Fuel filter with water drain and fuel preheating.
- ☑ Reversible fan drive kit.
- ☐ 24 V dc Water Heater.
- ☐ Fuel electric pump.

HYDRAULIC SYSTEM

Linde "Load Sensing" System for **synchronized movements**, regardless from the load and without any mutual influence. The system allows **precise control**, it ensures **better comfort** for the operator and a remarkable **energy saving**.

It is made of a *Load Sensing* modular proportional distributor, with increased capacity of the first and secondary arms function. It is powered by an axial piston pump with variable displacement.

Max flow	660 l/min
Max pressure	350 bar
Lifting circuit	350 bar
Travel circuit	350 bar
Rotation circuit	280 bar
Auxiliary circuit	250 bar

- ☑ Hydraulic oil tank with safety valve.

Cooling

Aluminum radiator for Hydraulic oil, engine's motor liquid and intercooler, with anti-clogging meshes.

Fan Drive System: Hydraulic cooling fan with electronic management of the speed, according to the temperature of the coolants and automatic inversion of rotation to clean the radiant masses: quick reaching for ideal working temperatures, reducing consumption and emissions, low noise level, maximum overall efficiency.

- ☐ Hydraulic oil preheating 230 V ac.
- ☐ Electromagnet hydraulic system.
- ☐ Additional hydraulic circuit and saddle for shears.

Electronic management

System control with **microprocessor** with hydraulic drive, which controls the injection pump of the diesel engine.

"*Fine mode*" for precision movements and "*auto-idle*" function for energy saving.

In case of electronic malfunctioning, it is however possible to move the machine, although with reduced power.



EQUIPMENT

- ☑ Standard
- ☐ Optional



HIGHEST EFFICIENCY

Thanks to the *Load Sensing* electronic control, speed and load capacity are among the best-in-class and enable quick and precise work cycles.



ENVIRONMENTAL CARE

Reduced fuel consumption and emissions under the strictest standards; patented system which enables to reduce NO_x , with no need of anti-particulate filters.

UPPER CARRIAGE

Rotation group with "swing drive" axial pistons engine with **LS control** section and braking valve, set on a double-stage planetary gearbox with hardened pinion. Alloy-steel slewing ring, with double row and **external hardened gear**.

Swing bearing diameter	1490 mm
Max rotation speed	6 - 8 rpm

- ☑ Front and top sun blinds
- ☑ Shatterproof glass on the top
- ☑ Cab Crystals screwed
- ☑ LED working lights (front and rear)
- ☑ Flashing orange light
- ☑ **Emergency cabin descent system** from Cab & recovery from the ground
- ☑ 1st Level FOGS / FOPS structure

Elevation to the roof	6,00 m
Operator view level	ca 5,40 m

The structure of the uppercarriage is provided with a counter-weight ballast made of cast iron, produced with privately owned molds.

- ☑ Automatic lubrication system for rows and gear with nylon pinion.
- ☑ Handrail and stairs for filters' access.
- ☑ Upper carriage's perimetric handrail.

MINCab 6.0

Certified parallelogram lifting system; New concept cabin, more comfortable, larger, soundproof. Antivibration system + **soft-touch** floor. Pantograph lifting by double-acting cylinders anti-shock devices.

Grammer® XL operator seat with **pneumatic suspension**, steel manipulator holders + 9 different adjustment systems which includes: tilt control; slide adjustment, backrest tilting, lumbar belt, armrest and headrest.

Heated seat, Seat belt, operator micro-presence switches.

- ☑ **Air conditioning**: easy access micro-filter, windshield heating, air recirculation function (pressurized cabin on request)
- ☑ **Integrated console** for Material Handler monitoring; TERA 7V -color display
- ☑ **Hi-fi Radio** with Mp3 player and Usb input
- ☑ Rear view **camera**, 5" color display

- ☑ BlueTooth radio
- ☑ Window protective film
- ☑ Microfilter with activated carbon/Hepa
- ☑ Pressurization system with activated carbon and/or HEPA filter
- ☑ Auxiliary heating system
- ☑ Additional camera/s for shaded areas
- ☑ **MinTouch** telematic system
- ☑ Fire extinguisher



EASY DIAGNOSTIC

New electric device with color screen 7" which allows to monitor the main working parameters, considerably helping the operator.



LOW MAINTENANCE COSTS

Easily available spare parts, common fittings, extended maintenance intervals.



Steering

Hydraulic steering with dedicated pump and safety valve.
Steering cylinder on the axle.
Steering column with adjustable inclination.

- ☞ Steering system with electrical buttons on joysticks.

Controls

Fully servo-assisted controls: two joysticks included in seat armrests control 1st and 2nd arm, rotation and bucket.
Easy buttons on joystick activate orientation or other functions.
Control panel on main dashboard is equipped with ergonomic tilting "fingers" for handling of cabin, front blade and outriggers.
Control panel is equipped by a controller + touch buttons with LED lights.

- ☑ Man Presence device.
- ☑ Emergency + service pedal brake.
- ☞ Proportional electric controls for special functions.



HEAVY DUTY UNDERCARRIAGE

Four-wheel drive HD undercarriage through HD axials in steel box, with epicyclic gears. Hydrostatic drive with hydraulic motor with variable displacement axial pistons-motor; down-hill control; blocking device for the max. capacity.

Max speed in 1 st gear	4 km/h
Max speed in 2 nd gear	12 km/h
Max inclination/slope	30%
Axle load capacity (each)	60 t

Wheels

No. 08 super elastic rubber wheels 12.00x20" (3000 mm-wide) on heavy duty 8" rims with rubber spacers between the wheels.

Brakes

Wet-type multiple disc brakes operating to both axles. Negative brake system on both axles (wet discs). During work the machine is perfectly locked.

- ☑ Reverse gear buzzer.
- ☑ Hydraulic front and rear outriggers.
- ☞ Undercarriage with rear outriggers and front dozer blade with two cylinders & integrated cylinder shield.
- ☞ Four outriggers and front blade.
- ☞ Manual greasing system.
- ☞ Tow hitch.



3000 mm wide HD undercarriage with rear outriggers and front dozer blade with double cylinders and integrated shield



3000 mm wide HD-undercarriage with front and rear outriggers (front blade optional)



HIGH STANDARD SAFETY DEVICES

Several safety devices to guarantee operator cab security & comfort.



RELIABILITY

60 years of manufacturing experience and first quality components allow us to offer stability, safety, design, and long-lasting machines, 100% made in Italy.

ARMS

High resistance steel and "FEM-Verified" arms.

M40.12

Straight boom	6700 mm
Monoblock stick	5000 mm
Total outreach	11,7 m

M40.13 ARC

Curved boom	7300 mm
Monoblock Stick	5000 mm
Total outreach	12,7 m

M40.145

Straight boom	8200 mm
Monoblock stick	6400 mm
Total outreach	14,5 m

M40.16

Straight boom	9000 mm
Monoblock stick	7300 mm
Total outreach	16 m

Hydraulic cylinder

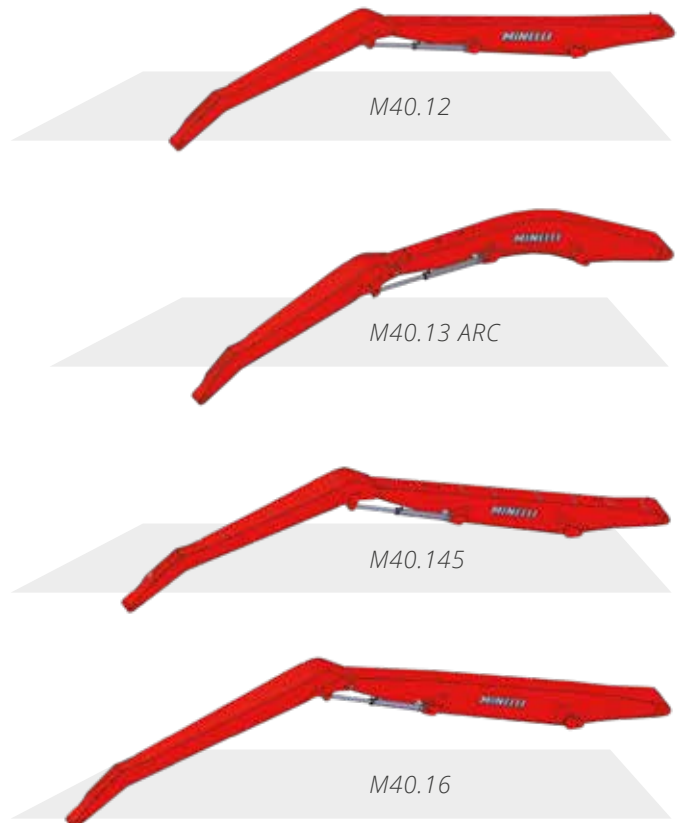
Cylinders with hydraulic-end-stroke brakes. Chrome plated & hardened stems. **Safety valves** on each cylinder.

- ☑ LED working lights.
- ☑ Secondary arm end-switch.
- ☐ Logs guard.

Lubricating system

Centralized system for arms and upper carriage:

- ☑ Automatic greasing with timer & diagnostic system; 12/14 lubrication points.



M40.12 with front blade and rear outriggers

TERA7 SYSTEM

Innovative Electronic Diagnostic System with 7" color display. The control unit collects all machine's parameters and displays them through easy-to-read graphical symbols, for an immediate understanding.

In case of anomalies or malfunctioning, the operator is warned with indication of the error level.

In addition to the anti-tipping device, the system supplies info regarding the deadline service and weight.

Parameters

- Engine speed.
- **Anti-tipping system.**
- Material handler status.
- Gasoline level and liquid temperatures.
- Engine and hydraulics malfunctionings.

Secondary pages

- Consumption.
- Weighing (approx ±5%).
- Service timing.
- Working range limits.
- MinTouch System



www.officineminelli.it



OFFICINE MINELLI s.r.l.

Via Padana Superiore, 1
 25046 Cazzago San Martino (BS) - ITALY
 Tel. +39 030 725012 r.a.
 Fax +39 030 7254518
info@officineminelli.it

